

**SITE PLAN**  
NTS

**GENERAL NOTES**

- ALL WORKS MUST BE UNDERTAKEN IN ACCORDANCE WITH THE APPROVED ESCP AND ASSOCIATED DEVELOPMENT CONDITIONS.
- EROSION AND SEDIMENT CONTROL MEASURES MUST CONFORM TO THE STANDARDS AND SPECIFICATIONS CONTAINED IN:
  - THE APPROVED ESCP AND SUPPORTING DOCUMENTATION; AND
  - THE LATEST VERSION OF INTERNATIONAL EROSION CONTROL ASSOCIATION (IECA) GUIDELINES, IF THE STANDARDS AND SPECIFICATIONS ARE NOT CONTAINED IN THE APPROVED ESCP.
- WITHIN THEIR AREA OF WORKS, CONTRACTOR IS RESPONSIBLE FOR IMPLEMENTATION, MONITORING AND MANAGEMENT OF ALL EROSION AND SEDIMENT CONTROL MEASURES TO THE SATISFACTION OF DEVELOPMENT ASSESSMENT SERVICES (DAS)
- WITHIN THEIR AREA OF WORKS, CONTRACTOR MUST TAKE ALL REASONABLE AND PRACTICABLE MEASURES TO CONTROL STORM WATER FLOW VELOCITIES, MINIMISE SOIL EROSION AND SEDIMENT RUNOFF, AND MITIGATE ENVIRONMENTAL HARM.
- UNEXPECTED CIRCUMSTANCES OR LARGE STORM EVENTS MAY NECESSITATE AMENDMENT OF THE ESCP. IN THE EVENT THAT SITE CONDITIONS CHANGE SIGNIFICANTLY FROM THOSE CONSIDERED WITHIN THE APPROVED ESCP, A REVISED EROSION AND SEDIMENT CONTROL PLAN (ESCP) MUST BE PREPARED AND CERTIFIED BY A CPESC, AND SUBMITTED FOR APPROVAL TO DAS WITH VARIATIONS IN EROSION AND SEDIMENT CONTROL MEASURES IMPLEMENTED.
- WHERE THERE IS HIGH PROBABILITY OF ENVIRONMENTAL HARM OCCURRING DUE TO SEDIMENT LEAVING THE SITE, CONTRACTOR MUST IMPLEMENT ALL REASONABLE AND PRACTICABLE MEASURES REQUIRED TO MITIGATE SUCH HARM, INCLUDING IMPLEMENTATION OF APPROPRIATE ADDITIONAL CONTROL MEASURES, WITH THE ESCP AMENDED AS SOON AS POSSIBLE AND RE-SUBMITTED FOR APPROVAL TO DAS.
- CONTRACTOR MUST MAINTAIN SUFFICIENT EROSION AND SEDIMENT CONTROL MATERIALS ON SITE FOR SHORT NOTICE REPAIRS.
- CONTRACTOR MUST MONITOR THE WORKS AREA WEEKLY, OR DAILY DURING RAINFALL, AND ADAPT ESC PRACTICES AS REQUIRED TO MAINTAIN THE REQUIRED PERFORMANCE STANDARD.
- A CERTIFIED PROFESSIONAL IN EROSION AND SEDIMENT CONTROL (CPESC) MUST BE ENGAGED TO UNDERTAKE INSPECTIONS DURING EXECUTION OF THE WORKS TO ENSURE THAT NOMINATED CONTROLS ARE BEING APPROPRIATELY INSTALLED AND MAINTAINED, AS WELL AS TO REVIEW ANY NEED TO AMEND THE ESCP DESIGN TO ADAPT TO CHANGING SITE OR CLIMATIC CONDITIONS. REFER INSPECTION SCHEDULE.
- THIS ESCP FOCUSES ON CLEARING WORKS. THE ESCP MUST BE REVISED PRIOR TO MAY 2025 AS CONSTRUCTION WORKS ARE PROGRESSED

**DISPERSIVE SOIL MANAGEMENT**

- AS NEW WORK AREAS ARE OPENED UP, THE CONTRACTOR MUST UNDERTAKE TESTING TO DETERMINE WHETHER THE AREA CONTAINS DISPERSIVE SOILS. IF DISPERSIVE SOIL ARE ENCOUNTERED, CONTACT THE ESCP DESIGNER FOR FURTHER ADVICE.
- MANAGEMENT OF DISPERSIVE SOILS INCLUDES THE FOLLOWING PRACTICES (2009. DEPARTMENT OF PRIMARY INDUSTRIES AND WATER (TASMANIA)):
  - MINIMISING DISTURBANCE TO TOPSOIL AND VEGETATION, WHERE PRACTICABLE.
  - MANAGING STORMWATER RUNOFF TO AVOID CONCENTRATED DISCHARGE ONTO DISPERSIVE SOILS. USE ABOVEGROUND DIVERSION MOUNDS AND PIPES IN LIEU OF TRENCHING AND CULVERTS, WHERE PRACTICABLE.
  - USING CONSTRUCTION ALTERNATIVES TO AVOID EXPOSURE OF DISPERSIVE SUBSOILS. WHERE REQUIRED TO BE EXPOSED, DISPERSIVE SOILS MAY NEED TO BE DUSTED WITH GYPSUM DURING PERIODS OF WET WEATHER.
  - WHERE TRENCHES ARE REQUIRED, BACKFILL WITH PROPERLY COMPACTED AND AMELIORATED SOILS. ALSO CONSIDER USE OF SAND FILTERS/BLOCKS TO PREVENT TUNNELLING IN SODIC SOILS. CAP COMPLETED WORKS WITH TOPSOIL AND VEGETATION.
  - WHERE OPEN DRAINS ARE REQUIRED, CAP WITH A THICK LAYER (200 TO 300 MM) OF NON-DISPERSIVE MATERIALS MIXED WITH GYPSUM, THEN TOPSOIL AND VEGETATE.
  - AVOID CONSTRUCTION OF DAMS (OR LEVEES AND BASINS) WITH DISPERSIVE SOILS, WHERE PRACTICABLE. OTHERWISE, ADOPT PRECISE COMPACTION, CHEMICAL AMELIORATION, CAPPING WITH NON-DISPERSIVE MATERIALS, USE OF SAND FILTERS/BLOCKS, AND ADEQUATE TOPSOILING AND VEGETATION.
  - REVEGETATION SHOULD BE COMPLETED WITH MIN. 150 MM NON-DISPERSIVE TOPSOIL AND APPROPRIATE GROUND COVER / VEGETATION.
- AS NOTED ABOVE, DISPERSIVE SOILS CAN BE AMELIORATED WITH GYPSUM TO IMPROVE THE STRUCTURAL STABILITY OF THE SOIL. GYPSUM SHOULD TYPICALLY BE UTILISED AT AN APPLICATION RATE OF 2.5T/HA (2010. DEPARTMENT FOR AGRICULTURE AND FOOD (GOVERNMENT OF WESTERN AUSTRALIA)). NOTE EXCESSIVE USE OF GYPSUM SHOULD BE AVOIDED TO PREVENT UNFAVOURABLE SALINITY FOR PLANT GROWTH.

| IECA SCHEDULE OF STANDARD DRAWINGS |  |
|------------------------------------|--|
|                                    | IECA STANDARD DRAWINGS - DRAINAGE CONTROLS |
| RCD-01                             | CHECK DAMS                                 |
| DB-01                              | FLOW DIVERSION BANKS                       |
|                                    | IECA STANDARD DRAWINGS - EROSION CONTROLS  |
| GRAVEL-01                          | GRAVELLING                                 |
| R-01                               | REVEGETATION - GENERAL                     |
| PAM-01                             | POLYACRYLAMIDE                             |
|                                    | IECA STANDARD DRAWINGS - SEDIMENT CONTROLS |
| EXIT-01                            | ROCK PAD                                   |
| EXIT-02                            | ROCK PAD                                   |
| SF-01                              | SEDIMENT FENCE                             |
| SF-02                              | SEDIMENT FENCE NOTES                       |
| RFD-03                             | ROCK FILTER DAM (INSTREAM)                 |
| RFD-04                             | ROCK FILTER DAM (INSTREAM)                 |
| MB-01                              | MULCH FILTER BERM                          |
|                                    | IECA DEWATERING                            |
| FB-01                              | FILTER BAGS AND FILTER TUBES               |
|                                    | DENR TECHNICAL NOTES                       |
| TN8                                | TECHNICAL NOTE 8 - DIVERSION BANKS         |

**NOTE:** IECA STANDARD DRAWINGS MAY BE ACCESSED VIA:  
<https://www.austieca.com.au/publications/book-6-standard-drawings>

| INSPECTION SCHEDULE |          |   |
|---------------------|----------|---|
| INSPECTION          | MONTH    | DESCRIPTION                               |
| 1                   | NOV 2024 | INSPECTION OF CLEARING CONTROLS           |
| 2                   | MAY 2025 | INSPECTION OF BULK EARTHWORKS CONTROLS    |
| 3                   | SEP 2025 | PRIOR TO WET SEASON (IF WORKS INCOMPLETE) |

**NOTE:** ONCE SCHEDULE CONFIRMED, CONSULT ESCP DESIGNER.

| SCHEDULE OF DRAWINGS |  |
|----------------------|--|
| DRAWING NO.          | DRAWING DESCRIPTION  |
| ESC1-001             | EROSION AND SEDIMENT CONTROL PLAN COVER SHEET                |
| ESC1-002             | EROSION AND SEDIMENT CONTROL PLAN NOTES                      |
| ESC1-003             | EROSION AND SEDIMENT CONTROL PLAN LAYOUT PLAN CLEARING WORKS |
| ESC1-004             | EROSION AND SEDIMENT CONTROL PLAN TYPICAL DETAILS            |

|                         |                             |
|-------------------------|-----------------------------|
| CLIENT                  | DEFENCE HOUSING AUSTRALIA   |
| SITE                    | 2CRU - STAGE 1              |
| ADDRESS                 | LOT 4783 TOWN OF NIGHTCLIFF |
| DEVELOPMENT PERMIT      | DP18/0409                   |
| AREA OF WORKS           | APPROX. 12.4 HECTARES       |
| CONSTRUCTION PERIOD     | NOV 2024 TO APR 2025        |
| CONTRACTOR CONTACTS     |                             |
| • SITE MANAGER          | JAKE M TBA                  |
| • PROJECT MANAGER       | JIMMY R TBA                 |
| • ENVIRONMENTAL OFFICER | JAKE M TBA                  |
| • ESCP DESIGNER         | PAUL BRANDIS 0411 560 831   |
|                         | CPESC No. 9681              |

**STAGING OF WORKS**

| ITEM OF WORKS                | TIMING SCHEDULE            |
|------------------------------|----------------------------|
| CLEARING                     | MAY 2024 TO NOV 2024       |
| BULK EARTHWORKS              | MAY 2025 TO SEP 2025 (TBC) |
| ROADS AND DRAINAGE WORKS     | MAY 2025 TO SEP 2025 (TBC) |
| REHABILITATION/STABILISATION | PROGRESSIVE                |

**NOTE:** STAGING OF WORKS IS BASED ON CURRENT UNDERSTANDING OF THE CONSTRUCTION PROGRAM AS OF NOVEMBER 2024. AS SCHEDULE FIRMS, CONTACT ESCP DESIGNER FOR ADVICE ON ADAPTING THE ESCP DESIGN TO SUIT CHANGING SITE AND CLIMATIC CONDITIONS.

DRAWINGS APPROVED BY CERTIFIED PROFESSIONAL IN EROSION AND SEDIMENT CONTROL.

NAME: PAUL BRANDIS  
CPESC NO: 9681

SIGNATURE:

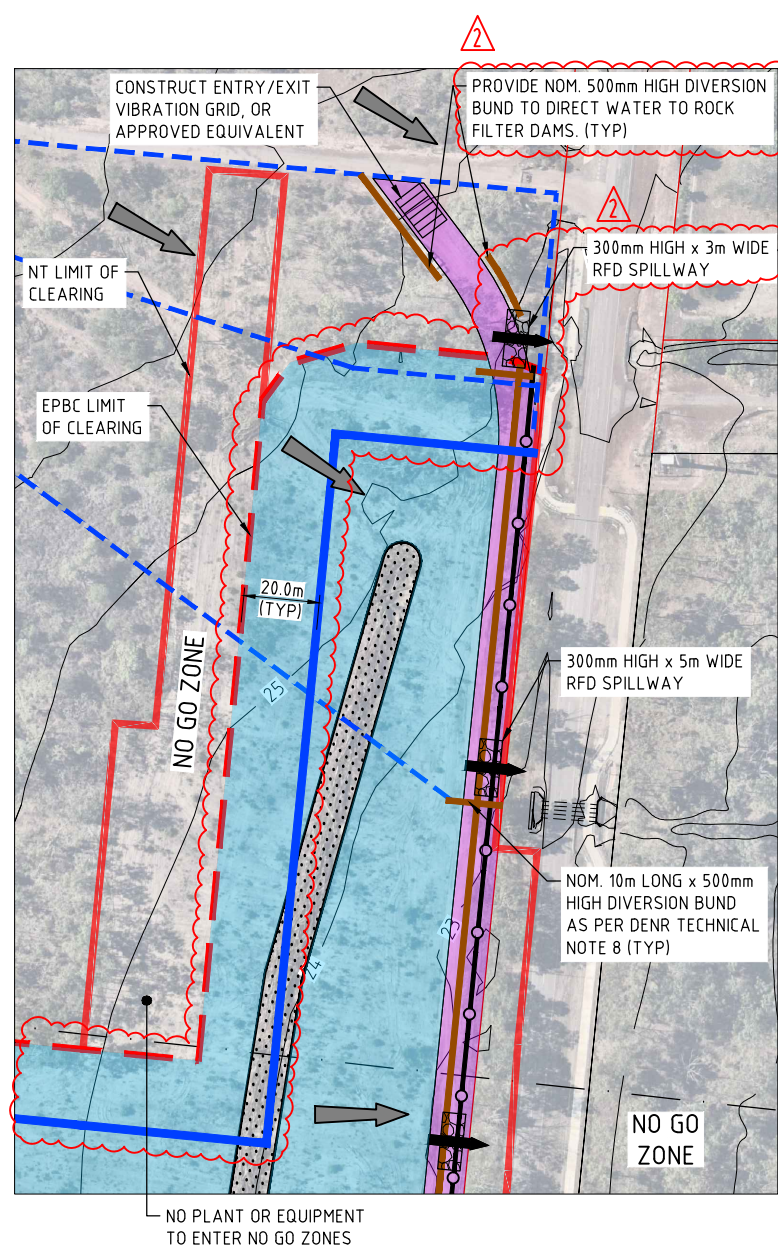
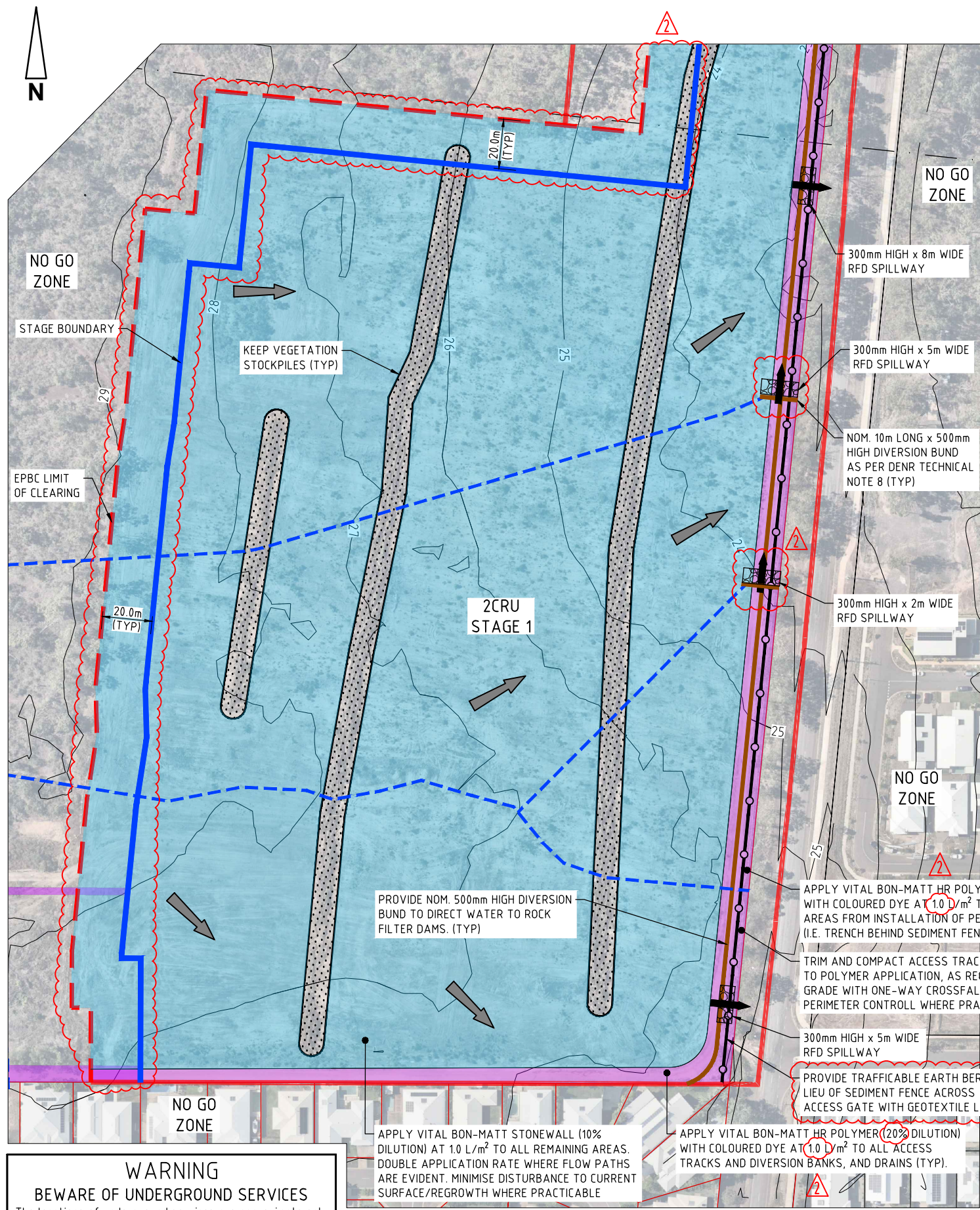
**WARNING**

**BEWARE OF UNDERGROUND SERVICES**  
The locations of underground services are approximate only and their exact position should be proven on site  
No guarantee is given that all existing services are shown

|  |          |            |                            |   |               |  |                   |                              |                               |                  |
|--|----------|------------|----------------------------|---|---------------|--|-------------------|------------------------------|-------------------------------|------------------|
| COPYRIGHT<br>The concepts and information contained in this document are the copyright of BYRNE CONSULTANTS.<br>Use or copying of the document in whole or in part without the written permission of BYRNE CONSULTANTS constitutes an infringement of copyright. |          | CLIENT<br> |                            | APPROVED<br>PB<br>DRAWN<br>SL<br>DESIGNED<br>PB | CHECKED<br>PB | TITLE<br><b>LEE POINT SUBDIVISION - 2CRU STAGE 1</b><br>LOT 4783 TOWN OF NIGHTCLIFF<br><b>EROSION AND SEDIMENT CONTROL COVER SHEET</b> | SCALE<br>AS SHOWN | PROJECT No<br><b>NT23022</b> | DRAWING No<br><b>ESC1-001</b> | AMDT<br><b>2</b> |
| No   | DATE     | INITIAL    | AMENDMENT                  |   |               |  |                   |                              |                               |                  |
| 2  | 10/12/24 | SL         | RE-ISSUED FOR CONSTRUCTION |   |               |  |                   |                              |                               |                  |
| 1  | 14/11/24 | SL         | RE-ISSUED FOR CONSTRUCTION |   |               |  |                   |                              |                               |                  |
| 0  | 12/11/24 | SL         | ISSUED FOR CONSTRUCTION    |   |               |  |                   |                              |                               |                  |

ABN 78 124 388 192  
P.O.Box 43420 Casuarina NT 0811  
Ph. 08 89472476 Fax: 08 89475098

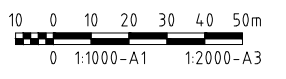




**LEGEND**

|  |  |
|--|--|
|  | EXISTING SURFACE CONTOURS (1.0m INTERVAL)                                      |
|  | NT LIMIT OF CLEARING   |
|  | EPBC LIMIT OF CLEARING   |
|  | STAGE BOUNDARY   |
|  | DIVERSION BUND (IECA STD DRG DB-01)  |
|  | SEDIMENT FENCE (IECA STD DRG SF-01 & SF-02)                                    |
|  | CATCHMENT BOUNDARY   |
|  | ENTRY/EXIT (IECA STD DRG EXIT-01 & EXIT-02)                                    |
|  | VITAL BON-MATT STONEWALL POLYMER (APPROX. 10.25 Ha)                            |
|  | VITAL BON-MATT HR POLYMER (APPROX. 1.40 Ha)                                    |
|  | VEGETATION STOCKPILE   |
|  | ROCK FILTER DAM WITH CONTROLLED SPILLWAY OUTLET (IECA STD DRG RFD-03 & RFD-04) |
|  | FLOW ARROW   |

**WARNING**  
**BEWARE OF UNDERGROUND SERVICES**  
 The locations of underground services are approximate only and their exact position should be proven on site. No guarantee is given that all existing services are shown.



| No | DATE     | INITIAL | AMENDMENT                  |
|----|----------|---------|----------------------------|
| 2  | 10/12/24 | SL      | RE-ISSUED FOR CONSTRUCTION |
| 1  | 14/11/24 | SL      | RE-ISSUED FOR CONSTRUCTION |
| 0  | 12/11/24 | SL      | ISSUED FOR CONSTRUCTION    |

**COPYRIGHT**  
 The concepts and information contained in this document are the copyright of BYRNE CONSULTANTS.  
 Use or copying of the document in whole or in part without the written permission of BYRNE CONSULTANTS constitutes an infringement of copyright.



APPROVED  
 PB  
 DRAWN  
 SL  
 DESIGNED  
 PB

CHECKED  
 PB

TITLE  
**LEE POINT SUBDIVISION - 2CRU STAGE 1**  
 LOT 4783 TOWN OF NIGHTCLIFF  
**EROSION AND SEDIMENT CONTROL PLAN**  
**LAYOUT PLAN CLEARING WORKS**

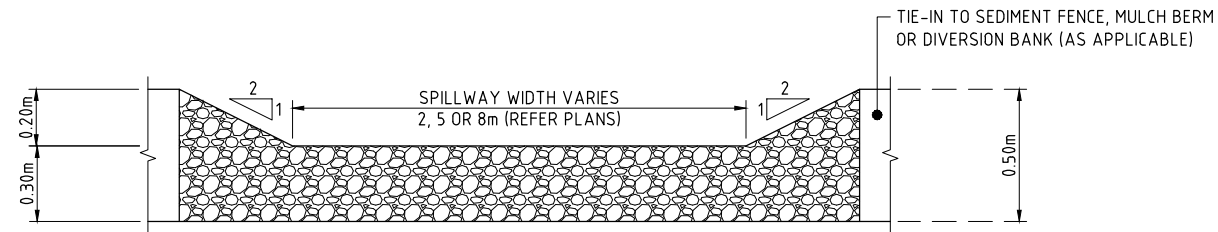
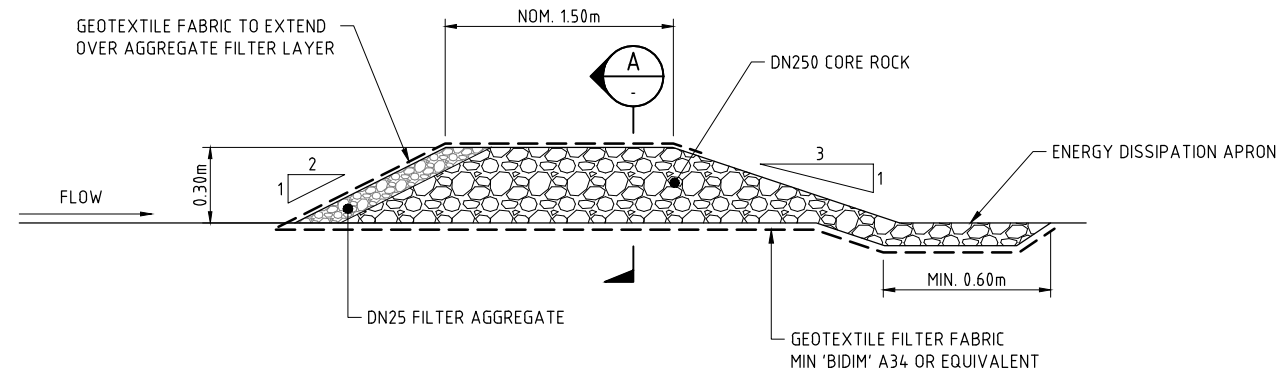
SCALE  
 AS SHOWN

PROJECT No  
**NT23022**

DRAWING No  
**ESC1-003**

AMDT  
**2**

ABN 78 124 388 192  
 P.O.Box 43420 Casuarina NT 0811  
 Ph. 08 89472476 Fax: 08 89475098



SECTION A  
NTS

TYPICAL ROCK FILTER DAM SPILLWAY

**WARNING**  
**BEWARE OF UNDERGROUND SERVICES**  
 The locations of underground services are approximate only and their exact position should be proven on site. No guarantee is given that all existing services are shown.

| No | DATE     | INITIAL | AMENDMENT                  |
|----|----------|---------|----------------------------|
| 2  | 10/12/24 | SL      | RE-ISSUED FOR CONSTRUCTION |
| 1  | 14/11/24 | SL      | RE-ISSUED FOR CONSTRUCTION |
| 0  | 12/11/24 | SL      | ISSUED FOR CONSTRUCTION    |

**COPYRIGHT**  
 The concepts and information contained in this document are the copyright of BYRNE CONSULTANTS. Use or copying of the document in whole or in part without the written permission of BYRNE CONSULTANTS constitutes an infringement of copyright.

CLIENT



|          |         |
|----------|---------|
| APPROVED |         |
| PB       |         |
| DRAWN    | CHECKED |
| SL       | PB      |
| DESIGNED | CHECKED |
| PB       |         |

|                                      |            |            |      |
|--------------------------------------|------------|------------|------|
| TITLE                                |            |            |      |
| LEE POINT SUBDIVISION - 2CRU STAGE 1 |            |            |      |
| LOT 4783 TOWN OF NIGHTCLIFF          |            |            |      |
| EROSION AND SEDIMENT CONTROL PLAN    |            |            |      |
| TYPICAL DETAILS                      |            |            |      |
| SCALE                                | PROJECT No | DRAWING No | AMDT |
| AS SHOWN                             | NT23022    | ESC1-004   | 2    |