

**SITE PLAN**  
NTS

CLIENT	DEFENCE HOUSING AUSTRALIA
SITE	2CRU - STAGE 2
ADDRESS	LOT 4783 TOWN OF NIGHTCLIFF
DEVELOPMENT PERMIT	DP18/0409
AREA OF WORKS	APPROX. 10.19 HECTARES
CONSTRUCTION PERIOD	MAY 2024 TO SEP 2025
CONTRACTOR CONTACTS	
• SITE MANAGER	JAKE M TBA
• PROJECT MANAGER	JIMMY R TBA
• ENVIRONMENTAL OFFICER	JAKE M TBA
• ESCP DESIGNER	PAUL BRANDIS 0411 560 831
	CPESC No. 9681

**STAGING OF WORKS**

ITEM OF WORKS	TIMING SCHEDULE
CLEARING	MAY 2024 TO NOV 2024
BULK EARTHWORKS	MAY 2025 TO SEP 2025 (TBC)
ROADS AND DRAINAGE WORKS	MAY 2025 TO SEP 2025 (TBC)
REHABILITATION/STABILISATION	PROGRESSIVE

**NOTE:** STAGING OF WORKS IS BASED ON CURRENT UNDERSTANDING OF THE CONSTRUCTION PROGRAM AS OF AUGUST 2024. AS SCHEDULE FIRMS, CONTACT ESCP DESIGNER FOR ADVICE ON ADAPTING THE ESCP DESIGN TO SUIT CHANGING SITE AND CLIMATIC CONDITIONS.

**GENERAL NOTES**

- ALL WORKS MUST BE UNDERTAKEN IN ACCORDANCE WITH THE APPROVED ESCP AND ASSOCIATED DEVELOPMENT CONDITIONS.
- EROSION AND SEDIMENT CONTROL MEASURES MUST CONFORM TO THE STANDARDS AND SPECIFICATIONS CONTAINED IN:
  - THE APPROVED ESCP AND SUPPORTING DOCUMENTATION; AND
  - THE LATEST VERSION OF INTERNATIONAL EROSION CONTROL ASSOCIATION (IECA) GUIDELINES, IF THE STANDARDS AND SPECIFICATIONS ARE NOT CONTAINED IN THE APPROVED ESCP.
- WITHIN THEIR AREA OF WORKS, CONTRACTOR IS RESPONSIBLE FOR IMPLEMENTATION, MONITORING AND MANAGEMENT OF ALL EROSION AND SEDIMENT CONTROL MEASURES TO THE SATISFACTION OF THE DEPARTMENT OF ENVIRONMENT, PARKS AND WATER SECURITY (DEPWS).
- WITHIN THEIR AREA OF WORKS, CONTRACTOR MUST TAKE ALL REASONABLE AND PRACTICABLE MEASURES TO CONTROL STORM WATER FLOW VELOCITIES, MINIMISE SOIL EROSION AND SEDIMENT RUNOFF, AND MITIGATE ENVIRONMENTAL HARM.
- UNEXPECTED CIRCUMSTANCES OR LARGE STORM EVENTS MAY NECESSITATE AMENDMENT OF THE ESCP. IN THE EVENT THAT SITE CONDITIONS CHANGE SIGNIFICANTLY FROM THOSE CONSIDERED WITHIN THE APPROVED ESCP, A REVISED EROSION AND SEDIMENT CONTROL PLAN (ESCP) MUST BE PREPARED AND CERTIFIED BY A CPESC, AND SUBMITTED FOR APPROVAL TO DEPWS WITH VARIATIONS IN EROSION AND SEDIMENT CONTROL MEASURES IMPLEMENTED.
- WHERE THERE IS HIGH PROBABILITY OF ENVIRONMENTAL HARM OCCURRING DUE TO SEDIMENT LEAVING THE SITE, CONTRACTOR MUST IMPLEMENT ALL REASONABLE AND PRACTICABLE MEASURES REQUIRED TO MITIGATE SUCH HARM, INCLUDING IMPLEMENTATION OF APPROPRIATE ADDITIONAL CONTROL MEASURES, WITH THE ESCP AMENDED AS SOON AS POSSIBLE AND RE-SUBMITTED FOR APPROVAL TO DEPWS.
- CONTRACTOR MUST MAINTAIN SUFFICIENT EROSION AND SEDIMENT CONTROL MATERIALS ON SITE FOR SHORT NOTICE REPAIRS.
- CONTRACTOR MUST MONITOR THE WORKS AREA WEEKLY, OR DAILY DURING RAINFALL, AND ADAPT ESC PRACTICES AS REQUIRED TO MAINTAIN THE REQUIRED PERFORMANCE STANDARD.
- A CERTIFIED PROFESSIONAL IN EROSION AND SEDIMENT CONTROL (CPESC) MUST BE ENGAGED TO UNDERTAKE INSPECTIONS DURING EXECUTION OF THE WORKS TO ENSURE THAT NOMINATED CONTROLS ARE BEING APPROPRIATELY INSTALLED AND MAINTAINED, AS WELL AS TO REVIEW ANY NEED TO AMEND THE ESCP DESIGN TO ADAPT TO CHANGING SITE OR CLIMATIC CONDITIONS. REFER INSPECTION SCHEDULE.

**INSPECTION SCHEDULE**

INSPECTION	MONTH	DESCRIPTION
1	NOV 2024	INSPECTION OF CLEARING CONTROLS
2	MAY 2025	INSPECTION OF BULK EARTHWORKS CONTROLS
3	SEP 2025	PRIOR TO WET SEASON (IF WORKS INCOMPLETE)

**NOTE:** ONCE SCHEDULE CONFIRMED, CONSULT ESCP DESIGNER.

- THIS ESCP FOCUSES ON THE SUBDIVISION AREA. WORKS WITHIN CONSERVATION ZONE (CN) AND CASUARINA COASTAL RESERVE WILL BE SUBJECT TO A SEPARATE EROSION AND SEDIMENT CONTROL PLAN.
- THIS ESCP FOCUSES ON CLEARING WORKS. THE ESCP MUST BE REVISED PRIOR TO MAY 2025 AS DETAILED DESIGN IS PROGRESSED

**SCHEDULE OF DRAWINGS**

DRAWING NO.	DRAWING DESCRIPTION
ESC001	EROSION AND SEDIMENT CONTROL COVER SHEET
ESC002	EROSION AND SEDIMENT CONTROL NOTES
ESC003	EROSION AND SEDIMENT CONTROL LAYOUT PLAN CLEARING WORKS
ESC004	EROSION AND SEDIMENT CONTROL TYPICAL DETAILS

**DISPERSIVE SOIL MANAGEMENT**

- AS NEW WORK AREAS ARE OPENED UP, THE CONTRACTOR MUST UNDERTAKE TESTING TO DETERMINE WHETHER THE AREA CONTAINS DISPERSIVE SOILS. IF DISPERSIVE SOIL ARE ENCOUNTERED, CONTACT THE ESCP DESIGNER FOR FURTHER ADVICE.
- MANAGEMENT OF DISPERSIVE SOILS INCLUDES THE FOLLOWING PRACTICES (2009. DEPARTMENT OF PRIMARY INDUSTRIES AND WATER (TASMANIA)):
  - MINIMISING DISTURBANCE TO TOPSOIL AND VEGETATION, WHERE PRACTICABLE.
  - MANAGING STORMWATER RUNOFF TO AVOID CONCENTRATED DISCHARGE ONTO DISPERSIVE SOILS. USE ABOVEGROUND DIVERSION MOUNDS AND PIPES IN LIEU OF TRENCHING AND CULVERTS, WHERE PRACTICABLE.
  - USING CONSTRUCTION ALTERNATIVES TO AVOID EXPOSURE OF DISPERSIVE SUBSOILS. WHERE REQUIRED TO BE EXPOSED, DISPERSIVE SOILS MAY NEED TO BE DUSTED WITH GYPSUM DURING PERIODS OF WET WEATHER.
  - WHERE TRENCHES ARE REQUIRED, BACKFILL WITH PROPERLY COMPACTED AND AMELIORATED SOILS. ALSO CONSIDER USE OF SAND FILTERS/BLOCKS TO PREVENT TUNNELLING IN SODIC SOILS. CAP COMPLETED WORKS WITH TOPSOIL AND VEGETATION.
  - WHERE OPEN DRAINS ARE REQUIRED, CAP WITH A THICK LAYER (200 TO 300 MM) OF NON-DISPERSIVE MATERIALS MIXED WITH GYPSUM, THEN TOPSOIL AND VEGETATE.
  - AVOID CONSTRUCTION OF DAMS (OR LEVEES AND BASINS) WITH DISPERSIVE SOILS, WHERE PRACTICABLE. OTHERWISE, ADOPT PRECISE COMPACTION, CHEMICAL AMELIORATION, CAPPING WITH NON-DISPERSIVE MATERIALS, USE OF SAND FILTERS/BLOCKS, AND ADEQUATE TOPSOILING AND VEGETATION.
  - REVEGETATION SHOULD BE COMPLETED WITH MIN. 150 MM NON-DISPERSIVE TOPSOIL AND APPROPRIATE GROUND COVER / VEGETATION.
- AS NOTED ABOVE, DISPERSIVE SOILS CAN BE AMELIORATED WITH GYPSUM TO IMPROVE THE STRUCTURAL STABILITY OF THE SOIL. GYPSUM SHOULD TYPICALLY BE UTILISED AT AN APPLICATION RATE OF 2.5T/HA (2010. DEPARTMENT FOR AGRICULTURE AND FOOD (GOVERNMENT OF WESTERN AUSTRALIA)). NOTE EXCESSIVE USE OF GYPSUM SHOULD BE AVOIDED TO PREVENT UNFAVOURABLE SALINITY FOR PLANT GROWTH.

**IECA SCHEDULE OF STANDARD DRAWINGS**

IECA STANDARD DRAWINGS - DRAINAGE CONTROLS	
RCD-01	CHECK DAMS
DB-01	FLOW DIVERSION BANKS
IECA STANDARD DRAWINGS - EROSION CONTROLS	
GRAVEL-01	GRAVELLING
R-01	REVEGETATION - GENERAL
PAM-01	POLYACRYLAMIDE
IECA STANDARD DRAWINGS - SEDIMENT CONTROLS	
EXIT-01	ROCK PAD
EXIT-02	ROCK PAD
SF-01	SEDIMENT FENCE
SF-02	SEDIMENT FENCE NOTES
RFD-03	ROCK FILTER DAM (INSTREAM)
RFD-04	ROCK FILTER DAM (INSTREAM)
MB-01	MULCH FILTER BERM
IECA DEWATERING	
FB-01	FILTER BAGS AND FILTER TUBES
	MISCELLANEOUS
ESC-02	GRATED STORMWATER FIELD INLET SEDIMENT TRAP
ESC-03	KERB INLET SEDIMENT TRAP

**NOTE:** IECA STANDARD DRAWINGS MAY BE ACCESSED VIA:  
<https://www.austieca.com.au/publications/book-6-standard-drawings>

**WARNING**

**BEWARE OF UNDERGROUND SERVICES**

The locations of underground services are approximate only and their exact position should be proven on site. No guarantee is given that all existing services are shown.

DRAWINGS APPROVED BY CERTIFIED PROFESSIONAL IN EROSION AND SEDIMENT CONTROL.

NAME: PAUL BRANDIS  
CPESC NO: 9681

SIGNATURE:

**COPYRIGHT**  
The concepts and information contained in this document are the copyright of BYRNE CONSULTANTS.  
Use or copying of the document in whole or in part without the written permission of BYRNE CONSULTANTS constitutes an infringement of copyright.

CLIENT



ABN 78 124 388 192  
P.O.Box 43420 Casuarina NT 0811  
Ph. 08 89472476 Fax: 08 89475098

No	DATE	INITIAL	AMENDMENT
3	10/12/24	SL	RE-ISSUED FOR CONSTRUCTION
2	14/11/24	SL	RE-ISSUED FOR CONSTRUCTION
1	26/08/24	NS	ISSUED FOR CONSTRUCTION
0	15/05/24	AD	ISSUED FOR CONSTRUCTION

APPROVED	
PB	
DRAWN	CHECKED
SL	PB
DESIGNED	CHECKED
PB	

TITLE <b>LEE POINT SUBDIVISION - 2CRU STAGE 2</b> LOT 4783 TOWN OF NIGHTCLIFF <b>EROSION AND SEDIMENT CONTROL COVER SHEET</b>			
SCALE	PROJECT No	DRAWING No	AMDT
AS SHOWN	<b>NT23022</b>	<b>ESC001</b>	<b>3</b>

**SITE MANAGEMENT**

1. CONSTRUCTION ACTIVITIES MUST BE STAGED SO THAT LAND DISTURBANCE IS CONFINED TO AREAS OF MANAGEABLE SIZE AND THE EXTENT AND DURATION OF SOIL EXPOSURE IS LIMITED. EROSION AND SEDIMENT CONTROL MEASURES MUST BE PROGRESSIVELY IMPLEMENTED TO SUIT.
2. ALL OFFICE AND OPERATIONAL ACTIVITIES MUST BE LOCATED SUCH THAT ALL LIQUID EFFLUENT (E.G. WASH-DOWN WATER) IS TOTALLY CONTAINED AND TREATED WITHIN THE SITE.
3. ALL LIQUIDS AND CHEMICALS MUST BE STORED AND HANDLED ON-SITE IN ACCORDANCE WITH RELEVANT STANDARDS, INCLUDING AS1940 - THE STORAGE AND HANDLING OF FLAMMABLE AND COMBUSTIBLE LIQUIDS.
4. SITE SPOILS MUST BE LAWFULLY DISPOSED OF IN A MANNER THAT DOES NOT RESULT IN ONGOING SOIL EROSION OR ENVIRONMENTAL HARM.
5. EXCAVATION WORKS MUST BE STAGED SO THAT THE DURATION OF EXPOSED OPEN TRENCHES IS LIMITED. TRENCHING MUST ONLY BE OPENED UP WHERE IT IS INTENDED TO BE BACKFILLED IN THE SAME WORK SEQUENCE.
6. NO LIQUID EFFLUENT IS PERMITTED TO BE DISPOSED OF ON SITE.
7. ACCESS TRACKS ARE TO INCORPORATE STABILISED ENTRY/EXIT POINTS.
8. ACCESS TRACKS ARE TO BE GRADED TO A CROWN OR WITH CROSSFALL DRAINAGE.
9. ACCESS TRACKS ARE TO BE MONITORED FOR EXCESSIVE SEDIMENT TRACKING INTO ADJACENT ROADS.

**CLEARING AND GRUBBING**

1. MINIMISE DISTURBANCE TO ONLY THOSE AREAS REQUIRED FOR CONSTRUCTION. ALL OTHER AREAS WILL BE FLAGGED AS "NO-GO ZONE" WHILE ADJACENT CLEARING IS UNDERTAKEN.
2. ALL CLEARING MUST BE CONDUCTED IN ACCORDANCE WITH FEDERAL, TERRITORY AND LOCAL GOVERNMENT ENVIRONMENTAL POLICIES.
3. BEFORE CLEARING COMMENCES, AREAS OF VEGETATION NOMINATED FOR PROTECTION MUST BE CLEARLY IDENTIFIED AND MARKED ON SITE (BY FLAGGING OR FENCING) AND INSPECTED BY THE SUPERINTENDENT. CLEARING OF VEGETATION MUST BE RESTRICTED TO THE NOMINATED AREAS. CONTRACTOR MUST TAKE ALL REASONABLE AND PRACTICABLE MEASURES TO MITIGATE RISK OF UNNECESSARY LAND CLEARING AND PREVENT REMOVAL OR DISTURBANCE OF ALL VEGETATION AND GROUND COVERS (ORGANIC OR INORGANIC) INTENDED TO BE RETAINED.
4. WHERE CLEARING IS REQUIRED FOR THE PURPOSE OF INSTALLING EROSION AND SEDIMENT CONTROL MEASURES, EXTENTS OF CLEARING MUST BE KEPT TO A MINIMUM.
5. DISTURBANCE OF THE NATURAL ENVIRONMENT MUST BE LIMITED TO THE MINIMUM IN KEEPING WITH THE SITE CLEARING PLANS.
6. WHERE AND WHEN A RISK OF SURFACE WATER RUNOFF OCCURS, CLEARING OR DISTURBANCE WITHIN DRAINAGE LINES SHOULD BE DELAYED UNTIL IMMEDIATELY PRIOR TO COMMENCING ACTIVE WORKS IN THAT LOCATION AND/OR STABILISED IMMEDIATELY FOLLOWING DISTURBANCE SUCH THAT CONCENTRATED RUNOFF WILL NOT MOBILISE SEDIMENT OR RESULT IN EROSION.
7. WITHIN THEIR AREA OF WORKS, CONTRACTOR MUST TAKE ALL PRACTICABLE AND REASONABLE MEASURES DURING CLEARING OPERATIONS TO PREVENT THE FORMATION OF FLOW PATHS THAT CAN CONCENTRATE SURFACE RUNOFF AND CREATE POTENTIAL FOR EROSION.

**STOCKPILE MANAGEMENT**

1. AVOID PLACEMENT OF STOCKPILES (WHERE PRACTICABLE) WITHIN 50m OF ANY DRAINS, DRAINAGE LINES OR OTHER WATERWAYS. SUITABLE TYPE 2/3 EROSION AND SEDIMENTATION CONTROLS TO BE IMPLEMENTED WHERE NOT PRACTICABLE.
2. THE FOLLOWING CONTROLS MUST BE IMPLEMENTED FOR STOCKPILES OF ERODIBLE MATERIAL:
  - A. STOCKPILES MUST BE LOCATED AT LEAST 2m FROM ANY RETAINED VEGETATION AND CONCENTRATED DRAINAGE LINES.
  - B. EARTH DIVERSION BUNDS MUST BE INSTALLED IMMEDIATELY UP-SLOPE OF THE STOCKPILE, WHERE THE CONTRIBUTING CATCHMENT EXCEEDS 1500m<sup>2</sup> AND MUST BE MANAGED TO AVOID CONCENTRATING FLOW CAUSING EROSION.
  - C. SEDIMENT CONTROL MEASURES MUST BE INSTALLED DOWNSTREAM OF THE STOCKPILE (E.G. MULCH BERMS OR SEDIMENT FENCES).
  - D. TRENCH SPOIL AND BACKFILL MATERIAL MUST GENERALLY BE STOCKPILED A MINIMUM OF 1.0m FROM OPEN TRENCHES.
3. STOCKPILE OF MATERIALS VULNERABLE TO SEDIMENTATION MUST BE COVERED IF REQUIRED.
4. STRIPPED TOPSOIL MUST BE STOCKPILED FOR REUSE. TOPSOIL STOCKPILE HEIGHTS MUST NOT EXCEED 2.0m MAX. ALL OTHER STOCKPILE HEIGHTS MUST BE 3.0m MAX WITH 1 IN 4 BATTERS MAX.
5. TOPSOIL STOCKPILES MUST NOT BE COMPACTED OR WHEEL ROLLED.
6. LONG-TERM STOCKPILES (10 DAYS OR MORE) MUST BE ADEQUATELY STABILISED (E.G. COVER, VEGETATION, SOIL BINDER, OR OTHER) AS DEEMED APPROPRIATE BY THE ESCP DESIGNER.
7. ALL DISTURBED AREAS OF STOCKPILES MUST BE SUITABLY STABILISED AND REHABILITATED WITH GRASS OR OTHER COVER.

**DUST CONTROL**

1. ALL DUST CONTROL MEASURES MUST BE APPLIED AND MAINTAINED IN ACCORDANCE WITH APPROVED ESCP DRAWINGS.
2. CONTRACTOR MUST BE RESPONSIBLE FOR THE EFFECTIVE CONTROL OF ALL DUST AND WINDBORNE MATERIAL EMANATING FROM THEIR AREA OF SITE THROUGHOUT THE CONSTRUCTION PERIOD.
3. CONTRACTOR MUST IMPLEMENT ALL MEASURES NECESSARY TO MINIMISE WIND EROSION AND PREVENT MATERIAL FROM THE SITE BEING BLOWN OVER OR ONTO PROPERTY OUTSIDE OF THE SITE. MEASURES MUST INCLUDE BUT NOT BE LIMITED TO:
  - A. MINIMISING TRAFFIC MOVEMENTS ON DISTURBED SURFACES AND LIMITING VEHICLE SPEEDS TO 25KPH;
  - B. DURING DRY PERIODS, UTILISE WATER TRUCK TO WATER DOWN WORKS SURFACES TO MINIMISE DUST GENERATION. DUST SUPPRESSION IS TO BE IMPLEMENTED BY SITE SUPERVISOR AS REQUIRED BY VISUAL INSPECTION;
  - C. PROGRAMMING WORKS TO MINIMISE THE LIFE OF SOIL STOCKPILES, OR TEMPORARILY STABILISING LONG TERM STOCKPILES.

**SURFACE WATER AND DRAINAGE CONTROL**

1. ALL DRAINAGE CONTROL MEASURES MUST BE APPLIED AND MAINTAINED IN ACCORDANCE WITH APPROVED ESCP DRAWINGS.
2. DURING THE CONSTRUCTION PHASE, ALL REASONABLE AND PRACTICABLE MEASURES MUST BE IMPLEMENTED TO:
  - A. DIVERT CLEAN SURFACE WATERS AWAY FROM DISTURBED SURFACES OF THE SITE IN A MANNER THAT MINIMISES EROSION OR CONTAMINATION OF WATER.
  - B. CONTROL FLOW VELOCITIES AND PREVENT SOIL EROSION ALONG DRAINAGE PATHS, INCLUDING ENTRY/EXIT POINTS; AND ENSURE ALL WATERS ARE DISCHARGED ONTO STABLE LAND, IN A NON-EROSIVE MANNER, AND AT A LEGAL POINT OF DISCHARGE.
  - C. MANAGEMENT OF DRAINAGE IS TO AVOID CONCENTRATION OF FLOW.
  - D. OPEN PROFILE TRAPEZOIDAL DRAINS INSTEAD OF "V" DRAINS ARE TO BE USED WHERE PRACTICABLE.
3. CONTROL WATER MOVEMENT THROUGH THE WORKS AREA; FLOW DIVERSION BANKS AND CATCH DRAINS ARE TO BE INSTALLED AS PER DRAWINGS.

**EROSION CONTROL AND SURFACE STABILISATION**

1. ALL EROSION CONTROL MEASURES MUST BE APPLIED AND MAINTAINED IN ACCORDANCE WITH APPROVED ESCP DRAWINGS.
2. SYNTHETIC EROSION CONTROL TREATMENTS MUST NOT BE USED IF SUCH MATERIALS ARE LIKELY TO CAUSE ENVIRONMENTAL HARM.
3. WHERE PRACTICABLE, MINIMISE FORWARD CLEARING TO 8 WEEKS DURING THE DRY SEASON (MAY TO SEPTEMBER) AND 4 WEEKS DURING THE WET SEASON (OCTOBER TO APRIL). MINIMISE FORWARD CLEARING TO 2 WEEKS FOR HIGH RISK WORKS (AVERAGE GRADIENT EQUAL TO OR GREATER THAN 10%, WORKS IN WATER WAYS, DISPERSIVE SUBSOILS).
4. WHERE PRACTICABLE, ACHIEVE MIN 80% GROUND COVER FOLLOWING COMPLETION OF WORKS WITHIN 30 DAYS DURING THE DRY SEASON AND 10 DAYS DURING THE WET SEASON AND WITHIN 5 DAYS FOR HIGH RISK WORKS.
5. SUITABLY STABILISE AREAS WHERE WORKS ARE EXPECTED TO BE SUSPENDED FOR A PERIOD EXCEEDING 30 DAYS IN THE DRY SEASON OR 10 DAYS IN THE WET SEASON, AND WHEN RAINFALL IS REASONABLY POSSIBLE.

**DEWATERING**

1. CONTRACTOR MUST MITIGATE SEDIMENT RELATED ENVIRONMENTAL HARM AND/OR IMPACT TO STORMWATER INFRASTRUCTURE RESULTING FROM DEWATERING ACTIVITIES.
2. FLOW DIVERSION BARRIERS, OR OTHER APPROPRIATE SYSTEMS, MUST BE USED TO MINIMISE THE QUANTITY OF WATER ENTERING EXCAVATIONS.
3. DEWATERING CONTROL MAY INCLUDE GEOTEXTILE FILTERS AND NON-WOVEN FILTER FENCING, OR DISCHARGE INTO SEDIMENT BASINS.
4. ALL STORMWATER DISCHARGE FROM DEWATERING TO MEET THE FOLLOWING WATER QUALITY OBJECTIVES:
  - pH - 6.5 TO 8.0
  - TURBIDITY - MAX 75 NTU's

**REVEGETATION AND REHABILITATION**

1. ALL WORKS MUST BE REHABILITATED AS SOON AS PRACTICABLE TO MINIMISE DURATION OF SOIL DISTURBANCE.
2. ALL DISTURBED AREAS NOT FORMING PART OF THE WORKS MUST BE REHABILITATED TO MATCH PRE-EXISTING CONDITIONS.

**SEDIMENT CONTROL**

1. ALL SEDIMENT CONTROL MEASURES MUST BE APPLIED AND MAINTAINED IN ACCORDANCE WITH APPROVED ESCP DRAWINGS.
2. ALL REASONABLE AND PRACTICABLE MEASURES MUST BE TAKEN TO PREVENT, OR AT LEAST MINIMISE, THE RELEASE OF SEDIMENT FROM THE SITE. SEDIMENT CONTROL DEVICES MUST BE INSTALLED TO TRAP SEDIMENT AS CLOSE TO THE SOURCE AS PRACTICABLE.
3. SEDIMENT CONTROL DEVICES MUST NOT PRESENT A SAFETY HAZARD FOR SITE WORKERS AND/OR THE PUBLIC.
4. SEDIMENT CONTROLS SHALL REMAIN IN PLACE UNTIL THE ACTIVITIES ARE FINISHED AND AREAS ARE STABILISED.
5. TRACKING OF SEDIMENTS ONTO ROADS EXTERNAL OF THE SITE IS NOT PERMITTED. ENTRY/EXIT TO SITE MUST BE RESTRICTED TO DEFINED POINTS, WITH SUPPLEMENTARY ENTRY/EXIT SEDIMENT CONTROLS INSTALLED.
6. SEDIMENT CONTROL DEVICES MUST BE DE-SILTED WHEN CAPACITY IS REDUCED BELOW 75%.

**INSTALLATION AND MAINTENANCE**

1. THE INSTALLATION AND MAINTENANCE OF ALL EROSION AND SEDIMENT CONTROLS MUST BE AUDITED BY A SUITABLY QUALIFIED PERSON TO ENSURE WORK PRACTICES ARE CONSISTENT WITH THE APPROVED ESCP.
2. THE CONTRACTOR MUST ENSURE SUITABLE CONSTRUCTION ACCESS IS AVAILABLE FOR THE INSTALLATION AND ONGOING MONITORING AND MAINTENANCE OF SEDIMENT CONTROL DEVICES.
3. DRAINAGE CONTROLS MUST BE MAINTAINED TO PREVENT BLOCKAGES AND UNCONTROLLED WATER DIVERSION/ FLOODING.
4. SEDIMENT CONTROLS, INCLUDING SEDIMENT BASINS, MUST BE MAINTAINED TO ENSURE SEDIMENT RETENTION CAPACITY DOES NOT FALL BELOW 75%. ALL MATERIALS, WHETHER LIQUID OR SOLID, REMOVED FROM SEDIMENT CONTROL DEVICES AND PLACES OF SEDIMENT DEPOSITION, MUST BE DISPOSED OF IN AN APPROVED MANNER THAT DOES NOT CAUSE FURTHER SOIL EROSION OR ENVIRONMENTAL HARM. MATERIALS MUST BE DISPOSED OF IN A LOCATION THAT PREVENTS MATERIALS RE-ENTERING THE SYSTEM. WHERE PRACTICABLE, CAPTURED SEDIMENT IS TO BE MIXED INTO EARTHWORKS OPERATIONS.
5. IF ANY EROSION AND SEDIMENT CONTROLS ARE FOUND TO BE DAMAGED OR INEFFECTIVE, RESULTING IN EROSION OR SEDIMENT LOSS, THE CONTRACTOR MUST MAKE GOOD AND CONSULT THE ESCP DESIGNER TO IDENTIFY NEEDS FOR ADDITIONAL REPAIRS, IMPROVEMENTS, SUBSTITUTES, OR ADDITIONAL CONTROL MEASURES.
6. ALL TEMPORARY EROSION AND SEDIMENT CONTROLS MUST BE MAINTAINED FULLY OPERATIONAL UNTIL PERMANENT STABILISATION OF WORKS AREAS IS COMPLETED.
7. THE CONTRACTOR MUST MAINTAIN SUFFICIENT SPARE MATERIALS (E.G. GEOTEXTILE, SEDIMENT FENCE, MULCH, ROCK) TO ENABLE ANY REQUIRED REPAIRS IN TIMELY MANNER.

**MONITORING AND REPORTING**

1. WHEN WORKS ARE BEING UNDERTAKEN ONSITE ALL EROSION AND SEDIMENT CONTROL MEASURES MUST BE INSPECTED:
  - A. ROUTINE WEEKLY INSPECTIONS;
  - B. MONTHLY DETAILED AUDITS;
  - C. DAILY, WHEN RAIN IS OCCURRING, AND WITHIN 18 HOURS FOLLOWING A RAINFALL EVENT OF SUFFICIENT INTENSITY AND DURATION TO CAUSE ON-SITE RUNOFF; AND
  - D. WITHIN 24 HOURS PRIOR TO EXPECTED RAINFALL.
2. WHEN WORKS ARE NOT BEING UNDERTAKEN ONSITE, ALL EROSION AND SEDIMENT CONTROL MEASURES MUST BE INSPECTED WEEKLY.
3. ALL SEDIMENT DEPOSITED OFFSITE AS A DIRECT RESULT OF CONSTRUCTION ACTIVITIES MUST BE REMOVED AND THE AREA APPROPRIATELY CLEANED / REHABILITATED AS SOON AS PRACTICABLE.
4. ANY FAILURE IN APPLIED DRAINAGE, EROSION AND SEDIMENT CONTROLS MUST BE REPORTED TO THE SITE MANAGER AND ENVIRONMENTAL OFFICER WITHIN 24 HOURS OF THE INCIDENT OCCURRING.
5. ANY INCIDENT WHICH RESULTS IN UNAUTHORISED DISCHARGE OF SEDIMENT OR SEDIMENT LADEN WATER TO A WATERWAY, OR HAS POTENTIAL TO RESULT IN SERIOUS ENVIRONMENTAL HARM, MUST BE REPORTED TO THE NT ENVIRONMENT PROTECTION AUTHORITY (NTEPA) WITHIN 24 HOURS VIA THE POLLUTION HOTLINE ON 1800 064 567.

**WARNING**  
**BEWARE OF UNDERGROUND SERVICES**  
 The locations of underground services are approximate only and their exact position should be proven on site  
 No guarantee is given that all existing services are shown

3	10/12/24	SL	RE-ISSUED FOR CONSTRUCTION
2	14/11/24	SL	RE-ISSUED FOR CONSTRUCTION
1	26/08/24	NS	ISSUED FOR CONSTRUCTION
0	15/05/24	AD	ISSUED FOR CONSTRUCTION
No	DATE	INITIAL	AMENDMENT

**COPYRIGHT**  
 The concepts and information contained in this document are the copyright of BYRNE CONSULTANTS.  
 Use or copying of the document in whole or in part without the written permission of BYRNE CONSULTANTS constitutes an infringement of copyright.

CLIENT

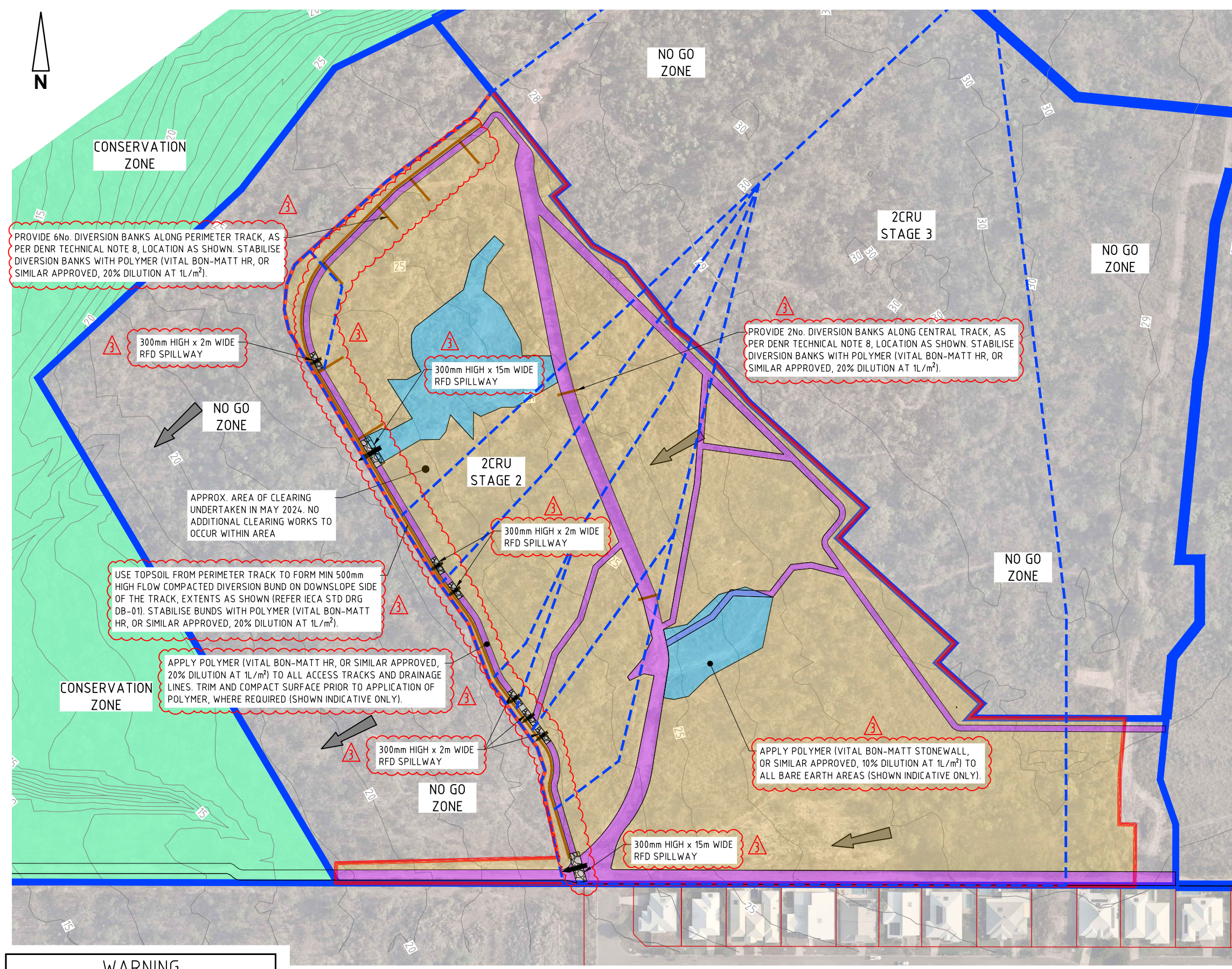


**byrne.**  
 ABN 78 124 388 192  
 P.O.Box 43420 Casuarina NT 0811  
 Ph. 08 89472476 Fax: 08 89475098

APPROVED	
PB	
DRAWN	CHECKED
SL	PB
DESIGNED	CHECKED
PB	

TITLE <b>LEE POINT SUBDIVISION - 2CRU STAGE 2</b>			
LOT 4783 TOWN OF NIGHTCLIFF			
EROSION AND SEDIMENT CONTROL NOTES			
SCALE	PROJECT No	DRAWING No	AMDT
AS SHOWN	<b>NT23022</b>	<b>ESC002</b>	<b>3</b>

**ISSUED FOR CONSTRUCTION**



**LEGEND**

	EXISTING SURFACE CONTOURS (1.0m INTERVAL)
	STAGE BOUNDARIES
	LIMIT OF CLEARING
	DIVERSION BUND (IECA STD DRG DB-01)
	CATCHMENT BOUNDARY
	VITAL BON-MATT STONEWALL POLYMER (APPROX. 0.70 Ha)
	VITAL BON-MATT HR POLYMER (APPROX. 2.0 Ha)
	ROCK FILTER DAM WITH CONTROLLED SPILLWAY OUTLET (IECA STD DRG RFD-03 & RFD-04)

PROVIDE 6No. DIVERSION BANKS ALONG PERIMETER TRACK, AS PER DENR TECHNICAL NOTE 8, LOCATION AS SHOWN. STABILISE DIVERSION BANKS WITH POLYMER (VITAL BON-MATT HR, OR SIMILAR APPROVED, 20% DILUTION AT 1L/m²).

300mm HIGH x 2m WIDE RFD SPILLWAY

300mm HIGH x 15m WIDE RFD SPILLWAY

PROVIDE 2No. DIVERSION BANKS ALONG CENTRAL TRACK, AS PER DENR TECHNICAL NOTE 8, LOCATION AS SHOWN. STABILISE DIVERSION BANKS WITH POLYMER (VITAL BON-MATT HR, OR SIMILAR APPROVED, 20% DILUTION AT 1L/m²).

300mm HIGH x 2m WIDE RFD SPILLWAY

USE TOPSOIL FROM PERIMETER TRACK TO FORM MIN 500mm HIGH FLOW COMPACTED DIVERSION BUND ON DOWNSLOPE SIDE OF THE TRACK, EXTENTS AS SHOWN (REFER IECA STD DRG DB-01). STABILISE BUNDS WITH POLYMER (VITAL BON-MATT HR, OR SIMILAR APPROVED, 20% DILUTION AT 1L/m²).

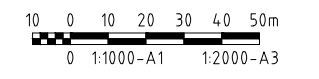
APPLY POLYMER (VITAL BON-MATT HR, OR SIMILAR APPROVED, 20% DILUTION AT 1L/m²) TO ALL ACCESS TRACKS AND DRAINAGE LINES. TRIM AND COMPACT SURFACE PRIOR TO APPLICATION OF POLYMER, WHERE REQUIRED (SHOWN INDICATIVE ONLY).

300mm HIGH x 2m WIDE RFD SPILLWAY

APPLY POLYMER (VITAL BON-MATT STONEWALL, OR SIMILAR APPROVED, 10% DILUTION AT 1L/m²) TO ALL BARE EARTH AREAS (SHOWN INDICATIVE ONLY).

300mm HIGH x 15m WIDE RFD SPILLWAY

**WARNING**  
**BEWARE OF UNDERGROUND SERVICES**  
 The locations of underground services are approximate only and their exact position should be proven on site  
 No guarantee is given that all existing services are shown



No	DATE	INITIAL	AMENDMENT
3	10/12/24	SL	RE-ISSUED FOR CONSTRUCTION
2	14/11/24	SL	RE-ISSUED FOR CONSTRUCTION
1	26/08/24	NS	ISSUED FOR CONSTRUCTION
0	15/05/24	AD	ISSUED FOR CONSTRUCTION

**COPYRIGHT**  
 The concepts and information contained in this document are the copyright of BYRNE CONSULTANTS.  
 Use or copying of the document in whole or in part without the written permission of BYRNE CONSULTANTS constitutes an infringement of copyright.

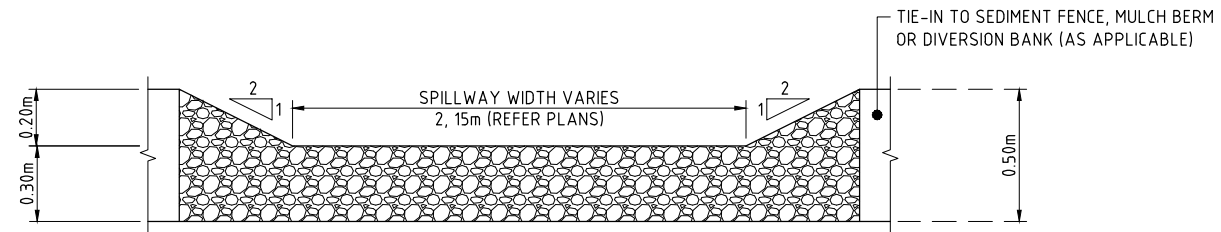
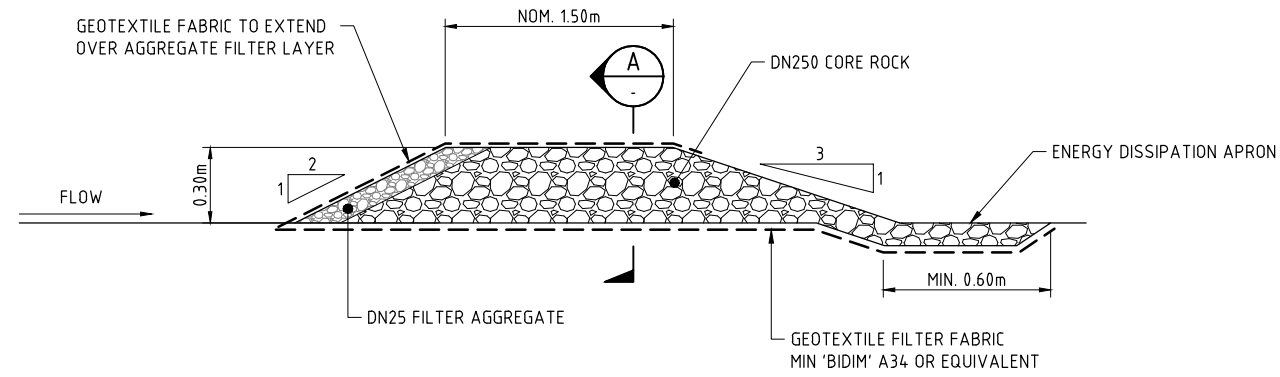


APPROVED  
 PB  
 DRAWN  
 SL  
 DESIGNED  
 PB

CHECKED  
 PB

ABN 78 124 388 192  
 P.O.Box 43420 Casuarina NT 0811  
 Ph. 08 89472476 Fax: 08 89475098

TITLE		LEE POINT SUBDIVISION - 2CRU STAGE 2	
		LOT 4783 TOWN OF NIGHTCLIFF	
		EROSION AND SEDIMENT CONTROL LAYOUT PLAN	
		CLEARING WORKS	
SCALE	PROJECT No	DRAWING No	AMDT
AS SHOWN	NT23022	ESC003	3



SECTION A-A  
NTS  
TYPICAL ROCK FILTER DAM SPILLWAY

**WARNING**  
**BEWARE OF UNDERGROUND SERVICES**  
 The locations of underground services are approximate only and their exact position should be proven on site  
 No guarantee is given that all existing services are shown

		COPYRIGHT The concepts and information contained in this document are the copyright of BYRNE CONSULTANTS. Use or copying of the document in whole or in part without the written permission of BYRNE CONSULTANTS constitutes an infringement of copyright.		CLIENT 		 ABN 78 124 388 192 P.O.Box 43420 Casuarina NT 0811 Ph. 08 89472476 Fax: 08 89475098		APPROVED PB DRAWN SL DESIGNED PB		CHECKED PB CHECKED		TITLE <b>LEE POINT SUBDIVISION - 2CRU STAGE 2</b> LOT 4783 TOWN OF NIGHTCLIFF <b>EROSION AND SEDIMENT CONTROL</b> <b>TYPICAL DETAILS</b>		SCALE AS SHOWN		PROJECT No <b>NT23022</b>		DRAWING No <b>ESC004</b>		AMDT <b>0</b>	
0	10/12/24	SL	ISSUED FOR CONSTRUCTION																		
No	DATE	INITIAL	AMENDMENT																		